

Freeman Software

Sales: 800-426-6598
Support: 972-840-1119

Windows Apparel Store Retail POS Inventory Program

- Maintains inventory.
- Writes invoices.
- Writes purchases orders.
- Provides complete control of inventory, sales, and customers.
- Prints detailed inventory and sales reports, reorder listings and mailing labels.
- Comes complete with a VENDOR and CUSTOMER database.
- Prints sales tickets, support cash drawer and bar code scanners.

Installing the program

Download the demo zip file onto your hard drive. Unzip the file and run the setup.exe file. When asked to save or run from current location, choose run from current location. We recommend you accept the default options during the installation. If you experience any problems and need assistance please call our **Technical Support Department at 972-840-1119**.

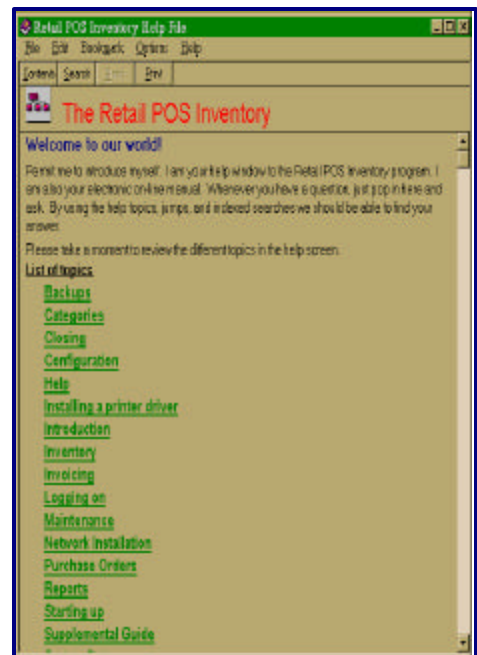
Getting acquainted with the program

Click on "**Help**" in the program group to learn more about the program. Click on the inventory icon to run the program. Once you are in the program you can access help at any time by pressing the "F1" function key. The program is "**context sensitive**"; meaning it will jump to the part of the help manual, which relates to this part of the program.

Splash Screen



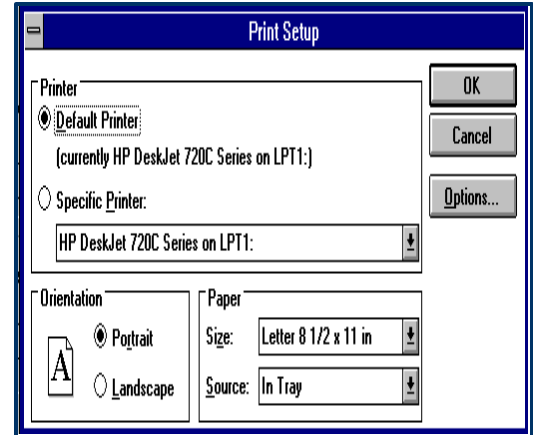
Help Screen



Hardware configuration

You need to select the printer you will use to print reports in this program. Click on **“Setup”** on the splash screen menu bar. Select **“Hardware changes”**. This opens a window for choosing the hardware. You only need to select the report printer for the demo program.

Click on the **“Selection”** button in the section labeled **“Report Printer”**. If text is displayed in this area for a printer you do not have click on **“Clear”** above the **“Selection”** button to remove this and click on **“Selection”**. A window appears. Click on the printer you want to use.



Use the down-arrow button if you do not see it. Click the button to keep this choice, then click **“Save”** on the hardware screen.

Stock number entry

The stock item entry screen is neatly organized to input data quickly. The pricing information has options for cost and retail prices. Just click on the arrow at the right of several of the fields to drop down the selection box to pick your description. You can easily **“Clone”** one stock number to another number without entering any of the detailed information again. The drop down lists from which to select data are **Package Type** and **Category**. The **vendor** field will drop down a list box in which you can enter multiple vendors from whom you might buy this product. The program shows the Month-to-date and Year-to-date totals sold at a glance.

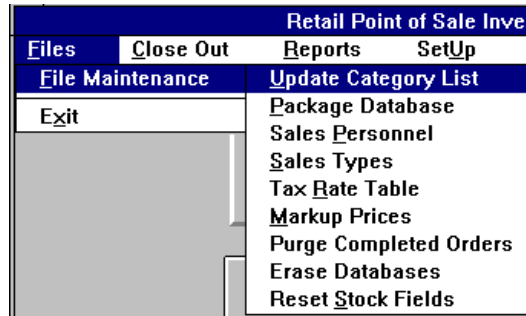


Updating reference files

Click on the "FILE/FILE MAINTENANCE" selection on the menu bar on the main screen. Select any of the several utilities (i.e., Category, Package Type, Tax Rates, etc.) and update the tables with new information. This file information is available for quick, error free selection when entering new stock numbers.

You can add names and descriptions to all of these lists at any time. Just click on the line below the last entry to add new names.

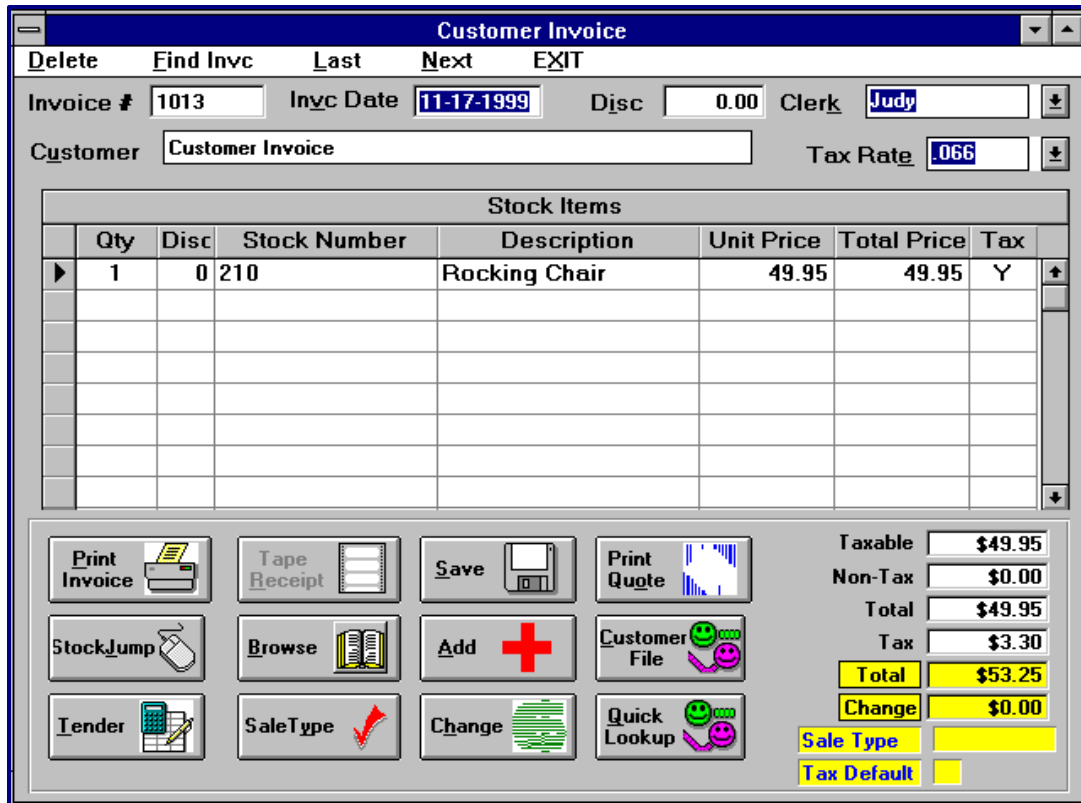
To delete an item click on the left margin next to a name where you normally see the arrow. This area will change color. Press the "DEL" key on the keyboard. The line will be deleted.



Writing Invoices

Click on the "Invoice" button on the main screen. Enter a quantity and scan the bar code number with a scanner or type the stock number on the first line in the grid. The lower part of the screen shows the status of the dollars on the sale at all times. If a number between 1-99 has been entered in the second column "Disc" this discount percentage will be applied to the unit price of the item and will be discounted immediately. The payment method can be distributed between ten different sale types. Click "Sale Type" to change a sale type. Arrow down and press, "Enter" to make your selection.

The "Discount" option at the top of the screen can be used to discount the entire invoice. If you enter "10", the appropriate discount will be applied as you enter the stock items.



Utilities

The program includes helpful utilities to make life easy.

Data file backup and restore

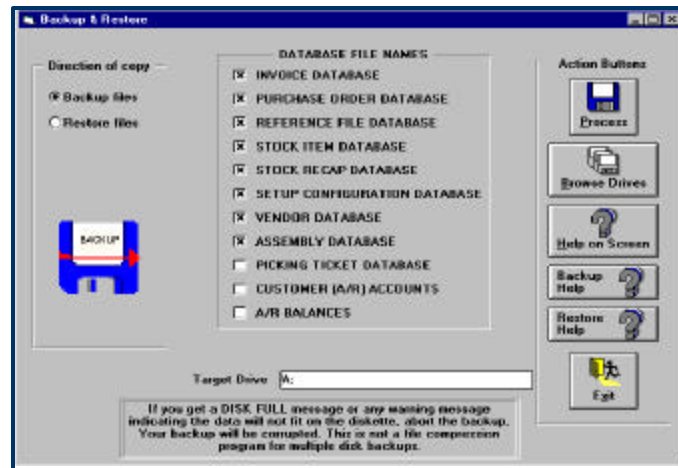
Data file repairing and compacting

Downloading of portable scanners

Running discrepancy reports when taking inventory

Exporting of data files

Importing of certain types of data files



Many retail stores favor the Windows Retail POS Inventory program.

- Apparel stores (ask for apparel store version)
- Book stores (ask for book store version)
- Liquor stores (ask for liquor store version)
- Music and CD stores (ask for music store version)
- Shoe stores (ask for apparel store version)
- Army/Navy stores
- Computer stores
- Electronic stores
- Hardware stores
- Marinas
- Beauty supply stores
- Cosmetic stores
- Gift stores
- Health food stores
- Novelty stores
- Camera stores
- Craft stores
- General stores
- Hobby shops
- Party supply stores

The program supports a number of peripherals supplied by Freeman Software.

- Bar code scanners (portable)
- MICR check readers
- Cash drawers
- Bar code scanners (KB type), laser, CCD, image scanners
- MSR (mag stripe readers)
- Tape receipt printers
- Slot readers
- Thermal label printers

Ask for our suggestions or prices for the right products for your business.
Our trained staff will be able to help you with your decision.

For more information just call or E-mail us.

Toll free: 800-426-6598 – Support: 972-840-1119 – Fax: 972-864-8994

E-mail: info@freemanpos.com

Web page: <http://www.freemanpos.com>